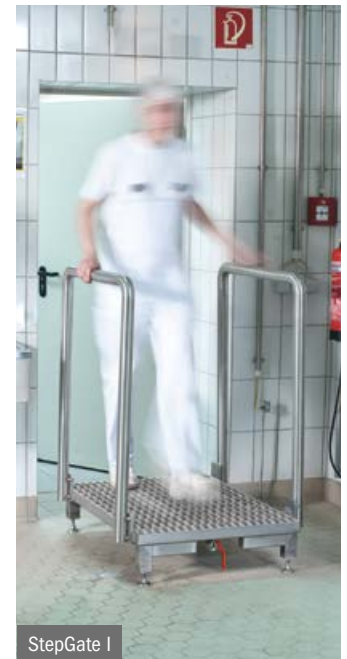


StepGate I – II – dry

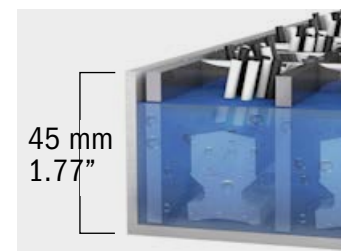
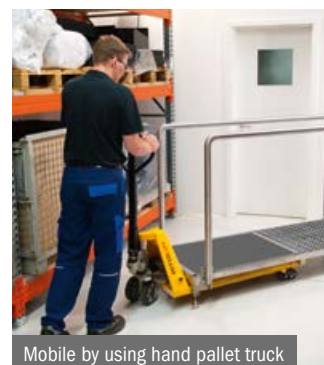
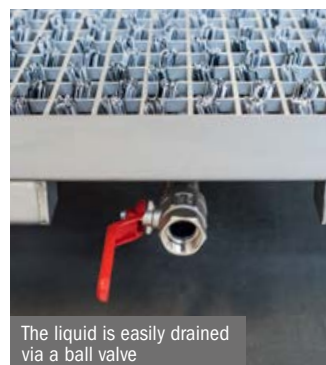
## The professional answer to disinfect footwear



- Rapid deployment, no installation needed
- Fill with disinfectant or dry brush
- Model „dry“ wipes off moisture
- Active cleaning, patented brush design
- Mobile by using hand pallet truck
- Built for the life of your facility



Technical Data	StepGate I	StepGate II	StepGate dry
<b>Dimensions (W x L x H)</b>	820 x 980 x 1180 mm	820 x 1960 x 1180 mm	820 x 1960 x 1180 mm
<b>Weight</b>	86 kg	160 kg	135 kg
<b>Length of brush section (W x L)</b>	660 x 960 mm	660 x 1920 mm	660 x 960 mm
<b>Length of wipe off section (W x L)</b>	-	-	660 x 960 mm
<b>Capacity</b>	15 l	2 x 15 l	15 l



[stepgate.de](http://stepgate.de)

